



LaM^ARCH^E

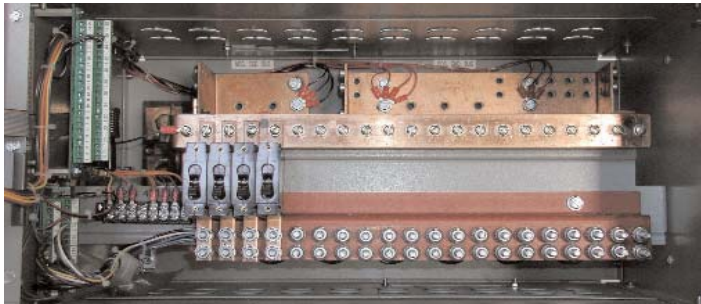
ISO 9001 CERTIFIED

CDPD

COMBINATION DISTRIBUTION PANEL



CDPD Center mounted on 23" rack with optional Digital Status Alarm package



Inside View of CDPD Center shown with optional Breakers

COMPACT DISTRIBUTION CENTER - ALL IN ONE DESIGN

The LaMarche CDPD (Combination Distribution Panel) center is designed for use with all LaMarche rectifier systems built on a standard 23" rack frame. This compact unit's standard features includes Ground & Charge busbars and provisions for up to (20) Load Breakers. With its optional Low Voltage Disconnect & Digital Status Alarm packages, the CDPD offers a compact solution utilizing only half of the rack spaces that would be required with standard discrete panel assemblies.

The CDPD center is accessible from the front, allowing the wiring of Load Breakers without requiring rear access. Threaded inserts provide quick and simple mounting of breakers in the field. The CDPD center provides versatile wiring access to the Battery and Load Termination points via the top, rear and bottom. A designation label is provided to identify Load and Breaker positions/ratings.

The CDPD center can accommodate up to (20) 1-pole Breakers for load distribution. Each breaker can be rated up to 125 amps, with a maximum total distribution rating of 200 & 400 amps of the respective CDPD models. Breakers rated from 10 to 60A utilizes (1) position, 70 to 100A utilizes (2) positions and the 125A

Standard Features

- 24VDC & 48VDC Positive or Negative Return versions
- 200A & 400A rated models
- Compact Design measuring 23"W (for relay rack mounting) X 15.5"D x 12.25"H (7 ru's). Consult factory for 19" rack mount availability.
- Front Accessibility with removable Top and Bottom panels
- 20-Position Single-Pole Load Breakers (0-125A) w/ Breaker Tripped LED and Form "C" contact.
- Ground/Charge Busbars
Accommodates Single or Two-Hole Lugs
Threaded inserts for ease of installation
- Ground Bus Termination Provisions
Qty (20) Load Returns for Two-Hole Lugs 1/2" centers and 1/4-20 hardware
Qty (3) Battery Returns for Two-Hole Lugs 1" centers and 5/16-18 hardware
- Charge Bus Termination Provisions
Qty (3) Battery Connections for Two-Hole Lugs 1" centers and 5/16-18 hardware

Optional Features

- Low Voltage Load Disconnect Package is Field Adjustable and includes: Fused Disconnect Contactor, Calibration Voltage Adjustment LED, Pickup Adjustment LED, Dropout Voltage Adjustment LED and Connected LED. With (2) Form "C" LVLD Alarm contacts
- Digital Status Alarm Package includes a Digital Volt/Amp Meter LED Display, a Multi-Mode Electronic Equalize Timer and Form "C" Alarm contacts for Breakers Tripped, Low Voltage, Low Voltage 2, Low Current, High Voltage and Summary Alarm. An Audible Alarm w/ Silence Switch is provided for the Summary Alarm.

breaker utilizes (4) positions of the (20) available. 200 & 400 amps Positive & Negative busbars for terminating Batteries and Load Return leads are provided as standard. The busbars can accommodate Single and/or Two-Hole Terminal Lugs.

An optional Low Voltage Disconnect circuit is available to disconnect the load from the system thus protecting the Battery bank from an over discharge. A Calibration circuit is provided to set the alarm points to the desired thresholds allowing adjustments to be made while the system is energized without affecting the load. The optional Digital Status Alarm package features a Digital Volt/Amp Meter LED Display with form "C" Alarm contacts as well as a Multi-Mode Electronic Equalize Timer to provide an equalize charge to the Battery bank when necessary.

LaMarche Manufacturing Company

106 Bradrock Drive, Des Plaines, IL 60018-1967
Tel: 847-299-1188 Toll Free Fax: 1-888-232-9562
sales@lamarchemfg.com www.lamarchemfg.com

CDPD COMBINATION DISTRIBUTION PANEL

CDPD Centers

Model Number	DC Voltage	Maximum Bus Rating	Low Voltage Disconnect	Digital Alarm System
CDPD400-24V-23-2	24	400	---	---
CDPD400-48V-23-2	48	400	---	---
CDPD200-24V-23-1	24	200	included	---
CDPD400-24V-23-1	24	400	included	---
CDPD200-48V-23-1	48	200	included	---
CDPD400-48V-23-1	48	400	included	---
CDPD200-24V-23-22	24	200	---	included
CDPD400-24V-23-22	24	400	---	included
CDPD200-48V-23-22	48	200	---	included
CDPD400-48V-23-22	48	400	---	included
CDPD200-24V-23-23	24	200	included	included
CDPD400-24V-23-23	24	400	included	included
CDPD200-48V-23-23	48	200	included	included
CDPD400-48V-23-23	48	400	included	included

- All CDPD centers are for 23" rack mounting. Overall dimensions are 23"Wx15.5"Dx12.25"H. Approximate weight of CDPD centers is 50 lbs.
- Positive Ground System is standard configuration. Part number changes as follow for Negative Ground Systems: CDPD400-24VN-23-2.
- Standard CDPD centers have (20) breaker positions for load distribution. Optional Breaker Kits are not included in CDPD (see adjacent chart for optional available breaker kits).
- Straight lugs are used if termination is from the top or bottom. 90° Turn Lugs are required to terminate through the back of the CDPD center. (see adjacent chart for optional available Compression type Lugs).

Optional U.L. Recognized Breaker Kits

Kit Number	Ampere Rating	Number of required breaker positions
SP4K-CDPD-10B1	10A	1
SP4K-CDPD-20B1	20A	1
SP4K-CDPD-30B1	30A	1
SP4K-CDPD-40B1	40A	1
SP4K-CDPD-50B1	50A	1
SP4K-CDPD-60B1	60A	1
SP4K-CDPD-70B1	70A	2
SP4K-CDPD-80B1	80A	2
SP4K-CDPD-90B1	90A	2
SP4K-CDPD-100B1	100A	2
SP4K-CDPD-125B1	125A	4

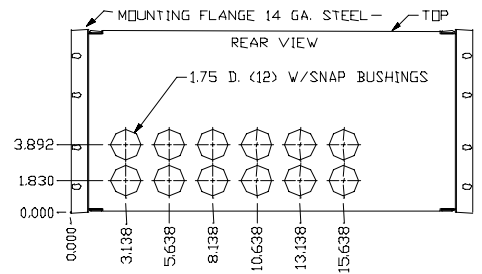
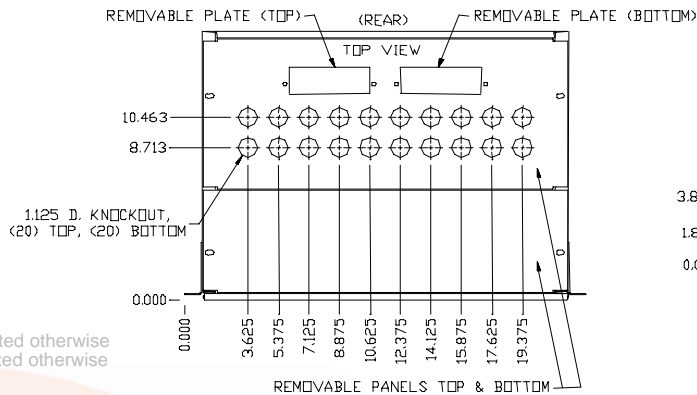
Optional Two-Hole Lug Kits

Lug Kit Number	Straight Lug		90° Lug	
	Qty	Size	Qty	Size
S4B-CDP/D-2	1	#6 AWG	1	#6 AWG
S4B-CDP/D-6	20	#6 AWG	20	#6 AWG
S4B-CDP/D-6S	40	#6 AWG	---	---

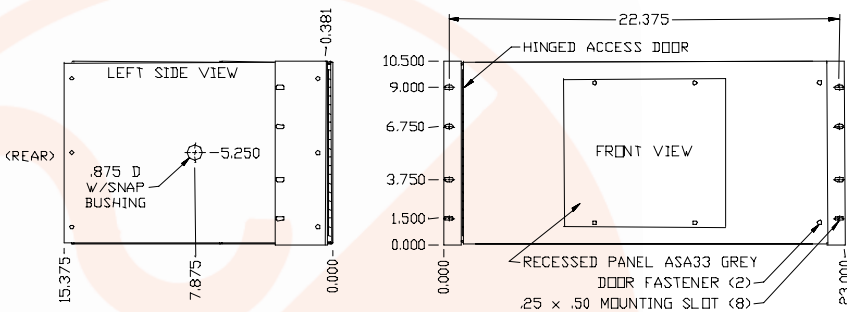
Optional Two-Hole Individual Lugs

Lug Number	Lug Type	Size
P7LUG-60	Straight Lug	#6 AWG
P7LUG-58	90° Lug	#6 AWG

Detailed Mounting Dimensions



Notes:
All Dimensions given in inches
Material: 16GA. Steel unless noted otherwise
Finish: ANSI 61 Gray unless noted otherwise



Specifications subject to change without notice

P25-DSKDPD-1
ECN 14854
09-01



106 Bradrock Drive, Des Plaines, IL 60018-1967
Tel: 847-299-1188 Toll Free Fax: 1-888-232-9562
sales@lamarchemfg.com www.lamarchemfg.com